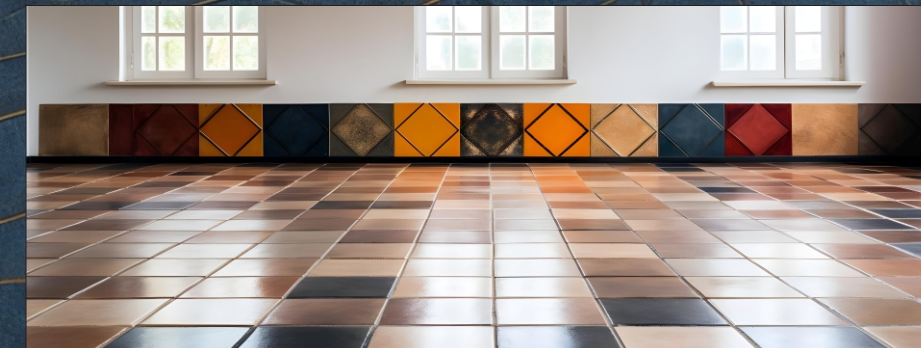
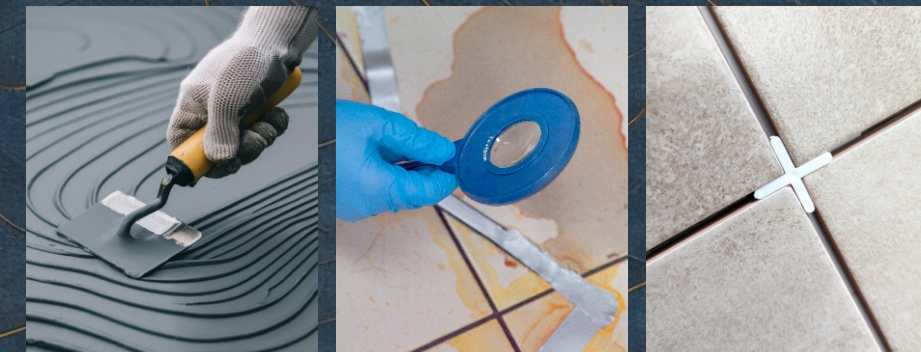




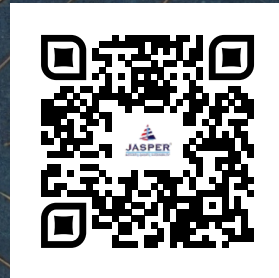
## JASPER SMART BOND ADHESIVE & CHEMICALS

### Step Into Elegance



Introducing Jasper Tile Adhesive and Chemicals  
Revolutionizing the Construction Industry

For products detail  
Please Scan QR Code.




Central Indias Biggest Manhole Cover Company



JASPER POLYPLAST INDIA

Lake Road VII - Asrawad Khurd, District - Indore (M.P.) 452020

Contact- 92851 02088, jasperpipes.in@gmail.com

 jasperpolyplast





## ABOUT US

Since its inception in 2017, the brand Jasper has swiftly established itself as a dynamic and forward-thinking entity in the market. With a profound commitment to innovation and creativity, Jasper set out to challenge the status quo and fill the void of ground breaking and superior-quality products in various industries. Through its core philosophy of offering smart, innovative, and exceptional solutions, Jasper has emerged as a prominent name in Central India, catering to regions such as Madhya Pradesh, Chhattisgarh, Maharashtra, Rajasthan, Uttar Pradesh and Telangana.

One of the standout features of Jasper is its extensive range of manhole covers, making it the leading manhole cover company in Central India. By prioritizing superior materials, durability, and design, Jasper has solidified its reputation as a trusted provider of essential infrastructure components.

As Jasper continues to elevate its presence and expand its offerings, the brand is venturing into additional market segments to meet evolving consumer needs. In addition to its renowned manhole covers, Jasper is now delving into diverse areas such as tile adhesives and chemicals, water filtration and drainage solutions, as well as electric water geysers.

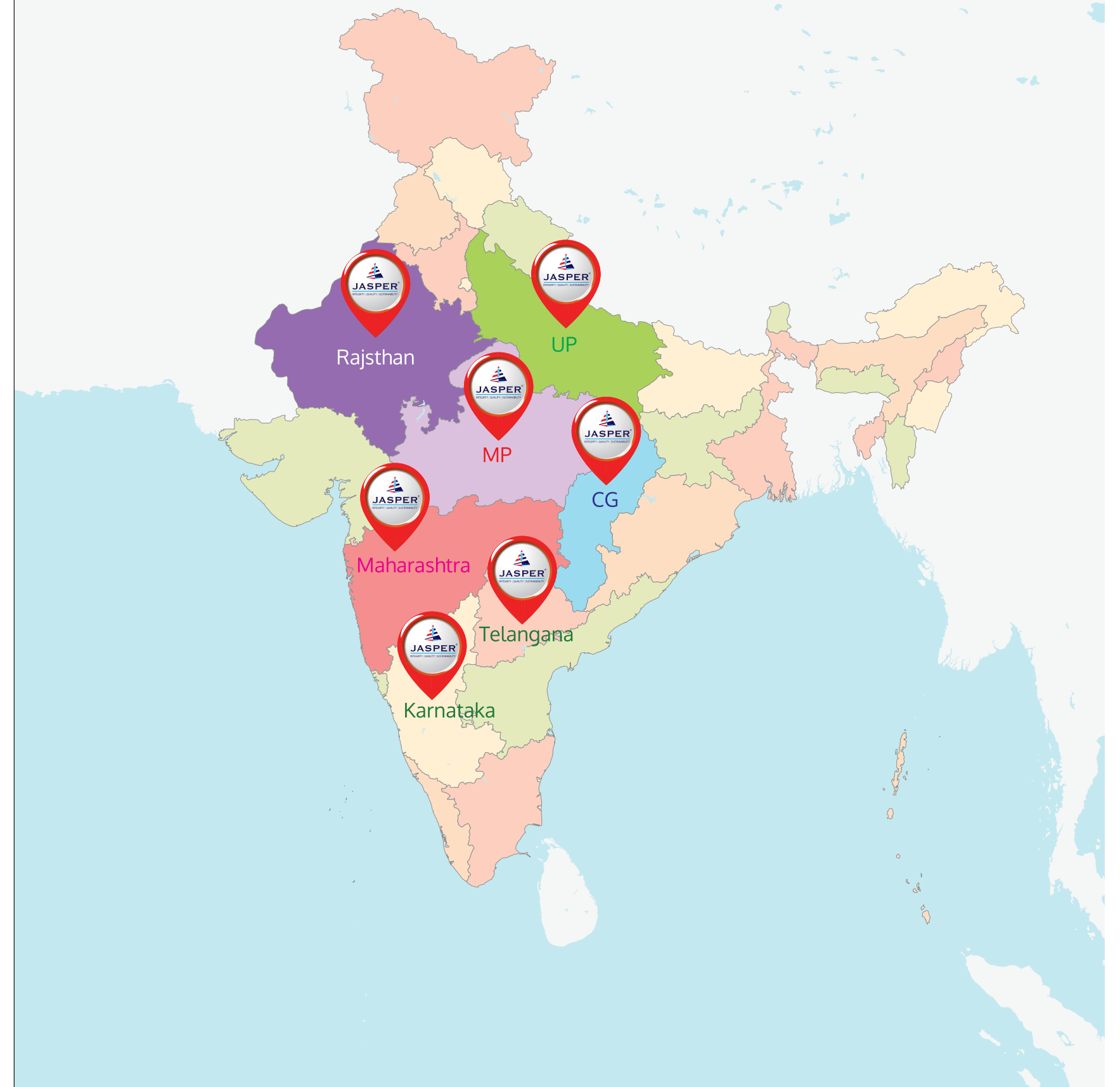
The success story of Jasper is a testament to the brand's relentless pursuit of excellence and unwavering commitment to quality. By staying true to its founding principles of innovation, creativity, and service excellence.

Looking ahead, Jasper is poised to continue its trajectory of expansion and diversification, aiming to cater to a wider audience across various industry sectors. With a strong focus on customer satisfaction, product innovation, and operational excellence, Jasper remains dedicated to shaping the future of infrastructure solutions in Central India and beyond.

Building Trust Through Integrity Integrity lies at the heart of Jasper's business ethos. The brand's commitment to honesty and integrity extends beyond the products themselves. Jasper strives to build trust with its customers by fostering long-term relationships based on reliability and ethical business practices.



## OUR PRESENCE



**Introducing Jasper Tile Adhesive and Chemicals:** Reliable Solutions for Your Construction Needs

When it comes to construction, choosing the right tile adhesive and chemicals is key to making your project last. In 2020, Jasper—known for its high-quality manhole covers—expanded into tile adhesives and chemicals with one goal: to offer reliable, high-performance products that live up to the same standards of quality and durability.

**Commitment to Quality**

At Jasper, quality isn't just a buzzword. Every product we offer undergoes strict testing to ensure it meets industry standards. Whether you need adhesive for ceramic tiles or specialized chemicals for grouting and sealing, we've got a wide range of products designed to suit different construction needs. Our goal is to give you solutions that work the first time, every time.

**Honesty and Guidance You Can Trust**

In an industry where cutting corners can lead to costly mistakes, Jasper stands for transparency. We make sure our customers understand the grades, specifications, and best uses of every product. We're not just selling adhesives; we're offering the peace of mind that comes from making informed choices. And if you need help figuring out which product is right for your project, our team of experts is always here to guide you.

**Fair Pricing Without Compromise**

High-quality construction materials shouldn't be out of reach. At Jasper, we believe in offering competitive prices without sacrificing quality. Whether you're working with a big budget or a tight one, you can count on getting top-notch products that deliver real value.

**A Partner You Can Rely On**

Since entering the tile adhesive market, Jasper has quickly earned a reputation for delivering on its promises. By focussing on quality, transparency, expert support, and fair pricing, we've set a new standard in the industry.

**INDEX**

• **CEMENTITIOUS ADHESIVES**

- DIAMOND STAR ADHESIVE
- PLATINUM STAR ADHESIVE
- GOLD STAR ADHESIVE
- SILVER STAR ADHESIVE

• **EPOXY (RESIN BASED) ADHESIVE**

- TITANIUM BOND ADHESIVE

• **EPOXY AND GROUTS**

- EPOXY GROUT
- SPARKLE EPOXY GROUT
- TILE JOINT FILLER (CEMENT BASED GROUT)

• **ADDITIVES AND CLEANERS**

- JASPER GROUT ADMIX
- JASPER TILE CLEANERS

• **ACCESSORIES**

- TILE SPACERS



# CEMENTITIOUS ADHESIVES



## JASPER SMART BOND DIAMOND STAR ADHESIVE

Jasper platinum star thin set adhesive is a high polymer modified adhesive with enhanced properties of extended open time & excellent bond strength which is necessary for fixing large format tiles/ natural stones & slim tiles on vertical & horizontal surface for indoor as well as outdoor application especially in external conditions.

### AREA OF APPLICATION

interior and exterior floor and wall installations of all types of ceramic tile, vitreous, semi-vitreous tile, glass mosaic tiles, precast terrazzo and natural stones over concrete and on a variety of substrates. Good underwater shear bond allows this product to be used for wet areas like swimming pools, sauna, water bodies and washrooms. Can be used for tile-on-tile applications and also as slurry bond adhesive in wet on wet applications.

COMPLIANCE	C2TES1 , 4TS1	
SHELF LIFE	12 months	
COVERAGE	5.0 - 5.3m <sup>2</sup> / 20kg bag (3mm bed)	
POT LIFE	3 - 4 hours	
WATER DEMAND	5.5L/ 20kg	
OPEN TIME	30 min	IS 15477:2019
ADJUSTMENT TIME	35 min	IS 15477:2019
SLIP	0.1 - 0.2mm	IS 15477:2019
FINAL FOOT TRAFFIC	24 hours	
TENSILE ADHESION AFTER 28 DAYS (DRY CONDITION)	2.30 - 2.60 N/mm <sup>2</sup>	IS 15477:2019
TENSILE ADHESION AFTER 28 DAYS (HEAT AGING)	1.10 - 1.60 N/mm <sup>2</sup>	IS 15477:2019
TENSILE ADHESION AFTER 28 DAYS (WET CONDITION)	1.30 - 1.80 N/mm <sup>2</sup>	IS 15477:2019
TRANSVERSE DEFORMATION	>= 2.50 mm	ISO 13007-2 Clause 4.5
SHEAR ADHESION AT 28 DAYS (DRY CONDITION)	1.90 - 2.20 N/mm <sup>2</sup>	IS 15477:2019
COLOR	Grey	
PACKING	20 kgs	





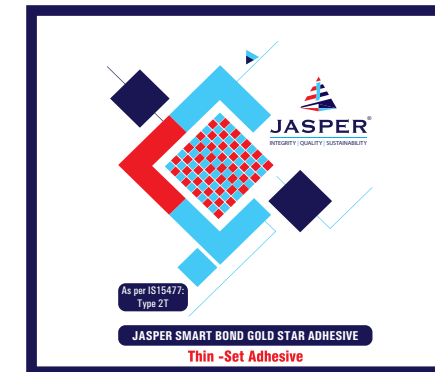
## JASPER SMART BOND PLATINUM STAR ADHESIVE

Jasper platinum star thin set adhesive is a high polymer modified adhesive with enhanced properties of extended open time & excellent bond strength which is necessary for fixing large format tiles/ natural stones & slim tiles on vertical & horizontal surface for indoor as well as outdoor application especially in external conditions.

### AREA OF APPLICATION

interior and exterior floor and wall installations of all types of ceramic tile, vitreous, semi-vitreous tile, glass mosaic tiles, precast terrazzo and natural stones over concrete and on a variety of substrates. Good underwater shear bond allows this product to be used for wet areas like swimming pools, sauna, water bodies and washrooms. Can be used for tile-on-tile applications and also as slurry bond adhesive in wet on wet applications.

COMPLIANCE	C2TE , 3T	
SHELF LIFE	12 months	
COVERAGE	5.0 – 5.2m <sup>2</sup> / 20kg bag (3mm bed)	
POT LIFE	2 – 3 hours	
WATER DEMAND	5.0L/ 20kg	
OPEN TIME	30 min	IS 15477:2019
ADJUSTMENT TIME	35 min	IS 15477:2019
SLIP	0.3 – 0.4mm	IS 15477:2019
FINAL FOOT TRAFFIC	24 hours	
TENSILE ADHESION AFTER 28 DAYS (DRY CONDITION)	1.70 – 1.80 N/mm <sup>2</sup>	IS 15477:2019
TENSILE ADHESION AFTER 28 DAYS (HEAT AGING)	1.10 – 1.20 N/mm <sup>2</sup>	IS 15477:2019
TENSILE ADHESION AFTER 28 DAYS (WET CONDITION)	1.25 – 1.40 N/mm <sup>2</sup>	IS 15477:2019
SHEAR ADHESION AT 28 DAYS (DRY CONDITION)	1.90 – 2.30 N/mm <sup>2</sup>	IS 15477:2019
COLOR	Grey / white	
PACKING	20 kgs	



## JASPER SMART BOND GOLD STAR ADHESIVE

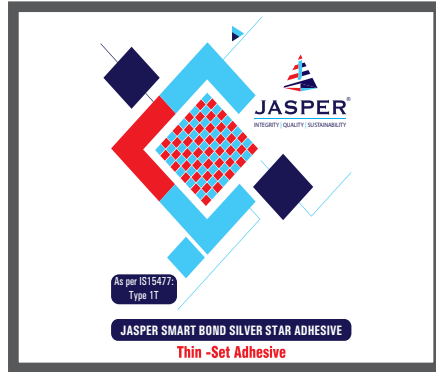
Jasper gold star thin set Adhesive is a highly polymer modified, thin-set tile adhesive for fixing all type of ceramic, semi-vitreous, vitrified tiles, on a variety of surfaces, for horizontal application, in dry as well as wet areas for indoor as well as application. It is also recommended for Tile-on-Tile Application also.

### AREA OF APPLICATION

Floor and walls, for internal areas and dry & wet area in domestic applications, commercial applications.

COMPLIANCE	C2T , 2T	
SHELF LIFE	12 months	
COVERAGE	5.0 – 5.1m <sup>2</sup> / 20kg bag (3mm bed)	
POT LIFE	2 – 2.5 hours	
WATER DEMAND	4.5L/ 20kg	
OPEN TIME	30 min	IS 15477:2019
ADJUSTMENT TIME	30 min	IS 15477:2019
SLIP	0.2 – 0.3mm	IS 15477:2019
FINAL FOOT TRAFFIC	24 hours	
TENSILE ADHESION AFTER 28 DAYS (DRY CONDITION)	1.50 – 1.60 N/mm <sup>2</sup>	IS 15477:2019
TENSILE ADHESION AFTER 28 DAYS (HEAT AGING)	1.00 – 1.20 N/mm <sup>2</sup>	IS 15477:2019
TENSILE ADHESION AFTER 28 DAYS (WET CONDITION)	1.15 – 1.30 N/mm <sup>2</sup>	IS 15477:2019
SHEAR ADHESION AT 28 DAYS (DRY CONDITION)	1.90 – 2.05 N/mm <sup>2</sup>	IS 15477:2019
COLOR	Grey / white 2	
PACKING	20 kgs	





## JASPER SMART BOND SILVER STAR ADHESIVE

Jasper silver star thin set Tile Adhesive is a polymer modified, grey cement-based thin-set tile adhesive for fixing high porosity tiles like ceramic/ clay tiles, tiles of regular size. It is suitable for horizontal surfaces, over the cementitious substrate for indoor application, in dry as well as wet areas. It also recommended for installation of vitrified tiles on the floor.

### AREA OF APPLICATION

Floor and walls, for internal areas and dry & wet area in domestic applications, commercial applications.

COMPLIANCE	C1T , 1T	
SHELF LIFE	12 months	
COVERAGE	5.0 – 5.2m <sup>2</sup> / 20kg bag (3mm bed)	
POT LIFE	1 – 2 hours	
WATER DEMAND	4.5L/ 20kg	
OPEN TIME	20 min	IS 15477:2019
ADJUSTMENT TIME	20 min	IS 15477:2019
SLIP	0.3 – 0.4mm	IS 15477:2019
FINAL FOOT TRAFFIC	24 hours	
TENSILE ADHESION AFTER 28 DAYS (DRY CONDITION)	0.60 – 0.70 N/mm <sup>2</sup>	IS 15477:2019
TENSILE ADHESION AFTER 28 DAYS (HEAT AGING)	0.50 – 0.60 N/mm <sup>2</sup>	IS 15477:2019
TENSILE ADHESION AFTER 28 DAYS (WET CONDITION)	0.50 – 0.60 N/mm <sup>2</sup>	IS 15477:2019
SHEAR ADHESION AT 28 DAYS (DRY CONDITION)	1.05 – 1.25 N/mm <sup>2</sup>	IS 15477:2019
COLOR	Grey	
PACKING	20 kgs	



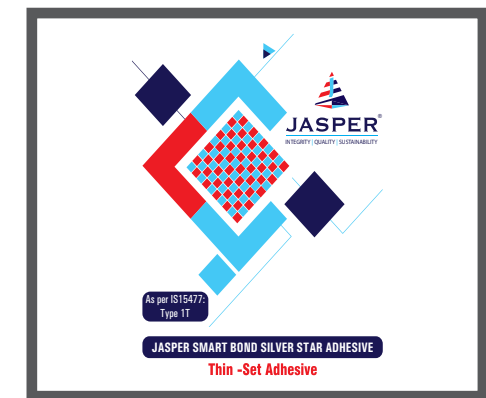
JASPER SMART BOND DIAMOND STAR ADHESIVE



JASPER SMART BOND PLATINUM STAR ADHESIVE



JASPER SMART BOND SILVER STAR ADHESIVE



JASPER SMART BOND SILVER STAR ADHESIVE



## TITANIUM BOND PU ( Epoxy based adhesives )



### JASPER TITANIUM BOND PU ( Epoxy based adhesives )

JASPER TITANIUM BOND is a two-part modified Polyurethane multipurpose thin-set adhesive for fixing all types of tiles and stones include(Composites engineered stone)on interior and exterior surface like Concrete Masonry & Brick Masonry, Cement mortar Beds & Plaster, Metal Substrates, dry wall boards, Plywood, all types of wood Substrate. It has been designed for fixing water Sensitive tiles / stones on deformable or absorbent/ non-absorbent Substrate. JASPER TITANIUM BOND is highly flexible and water freeze and thermal shock resistant when fully cured.

#### AREA OF APPLICATION

JASPER TITANIUM BOND is a two part modified Polyurethane multipurpose thin-set adhesive for fixing all types of tiles and stones include(Composites engineered stone)on interior and exterior surface like Concrete Masonry & Brick Masonry. Cement mortar Beds & Plaster, Metal Substrates, dry wall boards, Plywood, all types of wood Substrate. It has been designed for fixing water Sensitive tiles / stones on deformable or absorbent/ non-absorbent Substrate. JASPER TITANIUM BOND is highly flexible and water freeze and thermal shock resistant when fully cured. Floor and walls, internal & external area, water tanks , fountains & swimming pools etc., terraces & balconies, elevation & facades, window/ door frame, domestic applications, commercial applications.

COMPLIANCE	R2TES2 , T5-S2	
SHELF LIFE	12 months	
COVERAGE	1.3m2/ 8kg unit (3mm bed)	
POT LIFE	>1 hours	
MIXING RATIO	4:1	
OPEN TIME	>1 hours	IS 15477:2019
ADJUSTMENT TIME	>1 hours	IS 15477:2019
SLIP	0.1 - 0.2mm	IS 15477:2019
FINAL FOOT TRAFFIC	24 hours	
TENSILE ADHESION AFTER 28 DAYS (DRY CONDITION)	2.60 - 2.80 N/mm2	IS 15477:2019
TENSILE ADHESION AFTER 28 DAYS (HEAT AGING)	2.20 - 2.30 N/mm2	IS 15477:2019
TENSILE ADHESION AFTER 28 DAYS (WET CONDITION)	2.40 - 2.60 N/mm2	IS 15477:2019
TRANSVERSE DEFORMATION	> 5 mm	ISO 13007-2 Clause 4.5
SHEAR ADHESION AT 28 DAYS (DRY CONDITION)	6.50 - 7.50 N/mm2	IS 15477:2019
PACKING	4 kg	



## EPOXY AND GROUTS



**Packing size -1 kg , 5kg**

### JASPER SMART BOND EPOXY GROUT

JASPER is a premium brand in tile adhesives and chemicals, specializing in high-quality, three-component epoxy-based grouts under its "JASPER SMART BOND" product range. Known for its durability and aesthetic appeal, this epoxy grout comes in a wide array of beautiful color shades, allowing for perfect matching or creative contrasts with various tile designs. Engineered for long-lasting performance, Jasper Smart Bond epoxy grout is resistant to stains, chemicals, and moisture, making it ideal for high-traffic areas, wet environments, and spaces requiring a hygienic finish. The advanced three-component formula offers superior adhesion and strength, ensuring a seamless and durable bond. With easy-to-apply, smooth handling, and a stunning finish, JASPER's epoxy grout is a top choice for both professional tiling projects and high-end residential applications.

#### FEATURES AND ADVANTAGES

- 1. EXCEPTIONAL DURABILITY:** Offers a strong, long-lasting bond, resistant to wear and impact, ideal for high-traffic areas.
- 2. STAIN AND CHEMICAL RESISTANCE:** Resists stains, harsh chemicals, and solvents, maintaining a clean appearance even in demanding environments.
- 3. MOISTURE-PROOF:** Provides excellent waterproofing, preventing mold and mildew, making it perfect for wet areas like kitchens and bathrooms.
- 4. COLOR STABILITY:** Available in a range of beautiful shades that resist fading over time, ensuring a vibrant, consistent look.
- 5. EASY TO CLEAN:** Its smooth, non-porous surface makes it easy to maintain, even in high-usage settings.
- 6. HYGIENIC AND SAFE:** Non-porous and antimicrobial, it prevents bacterial growth, ideal for sanitary applications in homes and commercial spaces.



## AREA OF APPLICATION

Jasper smart bond Epoxy Grout is versatile and ideal for a range of applications, including:

- BATHROOMS AND SHOWERS:** Waterproof properties make it perfect for wet areas, preventing mould and mildew.
- KITCHENS:** Resistant to stains and chemicals, ideal for countertops, backsplashes, and floors.
- SWIMMING POOLS AND SPAS:** Highly durable and water-resistant, suitable for submerged environments.
- COMMERCIAL SPACES:** Withstands heavy foot traffic in malls, hotels, hospitals, and offices.
- INDUSTRIAL SETTINGS:** Chemical resistance makes it suitable for factories and laboratories.
- EXTERIOR SPACES:** Weather-resistant properties are ideal for outdoor tiling in patios, facades, and terraces.

Jasper smart bond epoxy grout ensures lasting performance and aesthetic appeal in both residential and commercial applications.

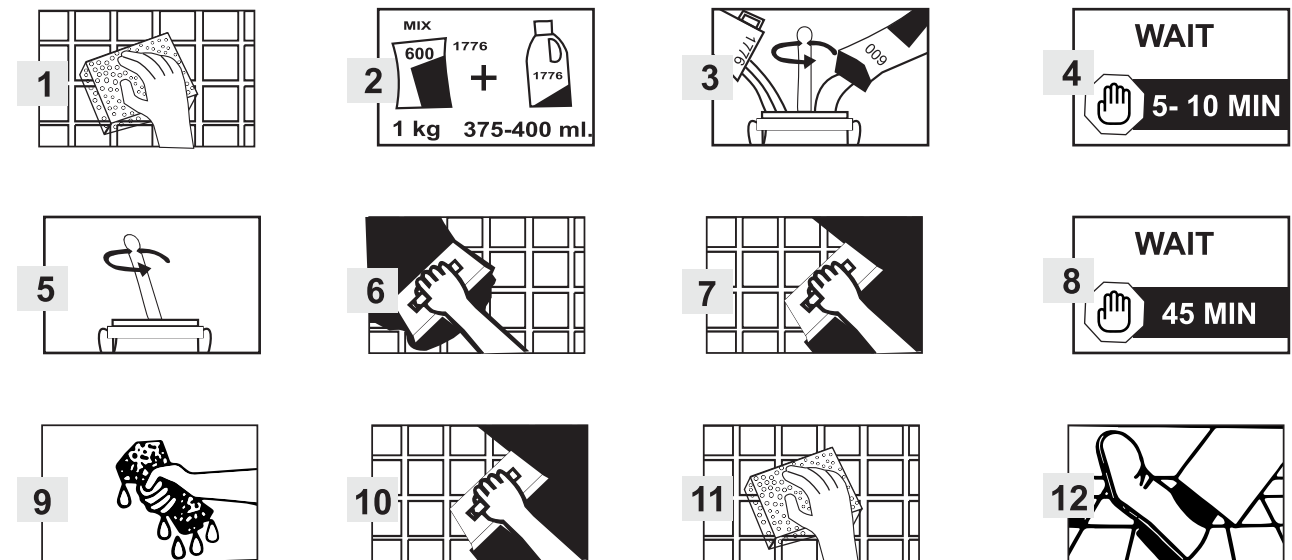
## TECHNICAL SPECIFICATIONS

1. Components	Three-part system (resin, hardener, and filler powder) for enhanced bonding strength and durability.
2. Mixing Ratio	Typically a precise ratio of resin, hardener, and filler to ensure optimal performance (check Jasper's specific guidelines).
3. Working Time	Approximately 45-60 minutes at 25°C, allowing sufficient time for application.
4. Pot Life	Around 45 minutes after mixing, depending on ambient temperature.
5. Setting Time	Initial setting in 4-6 hours; full curing achieved within 24 hours.
6. Joint Width Compatibility	Suitable for joints from 1.5mm to 15mm.
7. Water Absorption	< 0.1%, ensuring excellent water resistance.
8. Temperature Resistance	Stable from -30°C to +100°C, ideal for various environments.
9. Compressive Strength	Exceeds 45 MPa, offering high resistance to load and pressure.
10. Chemical	Resistant to acids, alkalis, oils, and solvents, suitable for Resistanceharsh environments.

These technical specifications make Jasper's epoxy grout reliable for both aesthetic and heavy-duty applications, ensuring a high-quality, long-lasting finish.

## HOW TO USE

- PREPARATION:** Ensure the tiles and joints are clean, dry, and free of dust, oil, or debris. Mask areas to avoid unwanted grout contact.
- MIXING:** : Combine the resin, hardener, and filler powder as per the suggested ratio (180 grams resin, 90 grams hardener and 730 grams filler) Mix thoroughly until you achieve a uniform, smooth consistency.
- APPLICATION:** apply the mixed grout to the tile joints, pressing firmly to fill gaps fully. Work diagonally across tiles to avoid air gaps.
- REMOVE EXCESS GROUT:** Immediately after application, use the float at a 45-degree angle to scrape off excess grout from the tile surface.
- CLEANING:** After 20-30 minutes, clean the tile surface with a damp sponge, ensuring not to disturb the grout in the joints. Rinse the sponge frequently to prevent grout haze.
- FINAL CURING:** Allow the grout to fully cure for 24 hours before subjecting it to water or heavy use.



## SAFETY AND PRECAUTION

When using epoxy-based three-component grout, prioritize safety by wearing appropriate personal protective equipment (PPE), including chemical-resistant gloves, safety goggles, and respiratory protection if ventilation is inadequate. Ensure proper ventilation in the workspace and store components in a cool, dry area, clearly labeled and segregated. Follow the manufacturer's mixing instructions, mixing only the necessary amounts with non-reactive tools. Avoid skin contact and cover surrounding areas to prevent spills.



## JASPER SMART BOND SPARKLE EPOXY GROUT

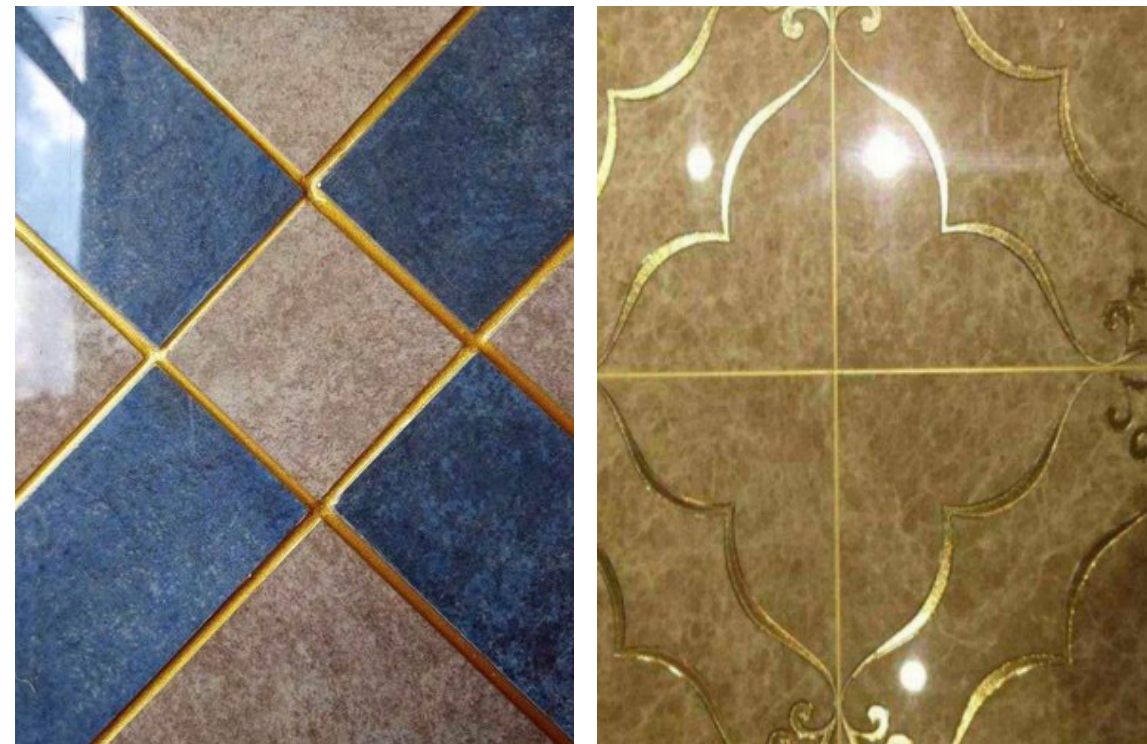
Experience the brilliance of \*Sparkling Colour Epoxy Shades\* by \*JASPER, a leading premium tile adhesive and chemical brand, featured in the cutting-edge \*\*JASPER SMART BOND\* product line. These epoxy shades are engineered to transform ordinary surfaces into stunning visual masterpieces, ideal for both residential and commercial applications.

Each shade is formulated with a high-performance blend of premium resins and vibrant pigments, ensuring a lustrous finish that sparkles with life. The unique formulation not only enhances aesthetic appeal but provides exceptional durability and adhesion, ensuring that your surfaces withstand daily wear and tear.

Available in a rich palette of colors, JASPER's sparkling epoxy shades allow you to unleash your creativity, enabling designers and homeowners to achieve customized looks that suit any style. The shimmering effect adds a touch of sophistication and elegance, making them perfect for spaces like kitchens, bathrooms, and retail environments, where first impressions matter.

In addition to their striking appearance, these epoxy shades boast impressive resistance to chemicals and moisture, making them ideal for areas susceptible to spills and stains. The ease of application ensures a seamless finish, while the quick curing time guarantees minimal downtime in your project.

With \*JASPER SMART BOND\*, you can achieve both eye-catching beauty and long-lasting functionality. Elevate your spaces with sparkling colour epoxy shades and discover the perfect blend of innovation and style that JASPER delivers. Transform your surfaces into lasting works of art with confidence!



## TILE JOINT FILLER (CEMENT BASED GROUT)

JASPER is a premium brand renowned for its high-quality, cement-based joint fillers, available in a versatile range of colors under its "Jasper Smart Bond" line. Designed to complement a wide array of tile styles and shades, these joint fillers provide both strength and elegance, ensuring long-lasting performance with a seamless finish. Engineered to resist cracks, stains, and moisture, Jasper Smart Bond joint fillers offer excellent durability and adhesion, making them ideal for both residential and commercial projects. Trusted by professionals, JASPER is committed to enhancing the durability and beauty of every tiling installation.

### JOINT FILLER FEATURES AND ADVANTAGES

- 1. ENHANCED DURABILITY:** Provides a strong, long-lasting bond between tiles, preventing tile movement and cracking.
- 2. MOISTURE RESISTANCE:** Prevents water infiltration, reducing the risk of mold, mildew, & water damage.
- 3. STAIN RESISTANCE:** High-quality grout is often stain-resistant, helping tiles maintain their appearance over time.
- 4. WIDE COLOR RANGE:** Available in various colours to match or accentuate tiles, enhancing design versatility.
- 5. SMOOTH FINISH:** Creates a seamless, polished look that elevates the overall appearance of tiled surfaces.
- 6. CRACK PREVENTION:** Reduces the likelihood of cracks and gaps, even in high-traffic areas.
- 7. EASY MAINTENANCE:** Quality grout is easy to clean, making ongoing maintenance simple and effective.
- 8. EFFICIENT INSTALLATION:** Consistent texture and quality make application faster & more precise.
- 9. TEMPERATURE RESISTANCE:** Withstands temperature fluctuations, making it suitable for both indoor and outdoor use.
- 10. ENHANCED SAFETY:** Helps keep tiles securely in place, reducing the risk of injury due to loose tiles.

Using premium grout adds not only to the aesthetic but also to the longevity and durability of tiled surfaces.

### SAFETY AND PRECAUTION

When handling cement-based joint filler grout, always wear protective gloves, goggles, and a dust mask to prevent skin, eye, and respiratory irritation. Work in a well-ventilated area to avoid inhaling dust, and avoid direct contact with skin. In case of skin or eye contact, rinse thoroughly with water. Keep grout out of reach of children and store it safely.



## ADDITIVES AND CLEANERS



### JASPER GROUT ADMIX

Introducing our innovative Grout Admix – the ultimate solution for stronger & more durable joints. Our product offers unmatched benefits to enhance your projects Colour Fastness: Enjoy vibrant and long-lasting Colour results. Reduced Water Absorption: Achieve superior water resistance. Enhanced Flexibility: Maintain structural integrity with added flexibility. Improved Compressive Strength: Experience unmatched strength for lasting results.

#### AREA OF APPLICATION

Floor & walls, internal & external area\*, domestic applications, commercial applications\*, wider tile joints up to 6 mm.

#### FEATURES AND ADVANTAGES

1. **EASY TO USE & CLEAN :** Just mix with JASPER Tile Joint Filler grout on site, ready to use.
2. **POLYMER EMULSION:** Impart flexibility, water & stain resistant, abrasion resistant.
3. **SUITABLE FOR VARIED TILE AND STONES:** Ceramic, vitrified, marbles, granites etc.
4. Crack free and less of shrinkage reduces the chances of water seepage.
5. **DURABLE :** Enhances compressive & flexural strength and shock resistance.

#### TECHNICAL INFORMATION

Testing Properties	Test Results
Appearance/ Color	White Liquid
Tentative Mixing Ratio (RTM : RTM Wide Additive)	200 ml or 400 ml for 1 kg RTM (2.5 - 3 : 1 by weight)
Mixed Density	1.75 ± 0.05 kg/ litre
Pot life @ 30°C	Approx. 60 minutes
Joint Width	1 – 6 mm
Sag Resistant	Non-sag
VOC Content (as per EPA 24)	< 14.41 g/ litre
Application Temperature	from +10°C to +35°C
Light Foot Traffic	24 hours
Regular Traffic	72 hours
Final Curing Time	28 days





## JASPER TILE CLEANERS

JASPER Tile Cleaner is a powerful, specialized solution designed to keep tile surfaces spotless & sparkling. Formulated to tackle tough stains, grime, & dirt buildup, it quickly removes water stains, cement residue, soap scum, & other stubborn marks that accumulate on tiles over time. Jasper Tile Cleaner is ideal for bathroom and kitchen surfaces, including ceramic, vitrified & porcelain tiles. Its fast-acting formula dissolves residues without damaging tile finishes, ensuring surfaces stay clean and bright with minimal effort. Safe and easy to use.

### AREA OF APPLICATION

Cleaning floor and wall tiling in kitchen, bathrooms, toilets, garages, factories, general building sites & residential tiling. Internal & external tiling area. Domestic & commercial tiling area. Routing tile cleaning with mop in bathroom & other tiling area.

### FEATURES AND ADVANTAGES

1. **EASY TO USE & CLEAN:** just mix with water & clean the surface.
2. **REMOVES DIFFICULT STAINS EASILY:** Fast & effective.
3. Degreases the tile surface easily for soaps, scum, efflorescence, mineral deposit.
4. Cleans all types of tile like ceramic, porcelain & vitrified tile and grout.
5. Protects the colour & shine of tile.
6. Does not damage joints between ceramic tiles, even those grouted with colored products.
7. Not harmful like acid.

### TECHNICAL SPECIFICATIONS

1	Physical State and Appearance	Clear Viscous Liquid.
2	Molecular Weight	NA
3	pH	<1
4	Boiling/Condensation	100°C initial
5	Vapour Pressure	25mm Hg @ 20°C
6	Melting/ Freezing Point	Not available.
7	Instability Temperature	Not applicable.
8	Vapor Density	>1 (Air = 1)
9	VOC	Not available.
10	Evaporation Rate	<1.
11	Dispersion Properties	Dispersed in cold water, hot water, methanol, diethyl ether, n-octanol, acetone
12	Solubility	Easily soluble in cold water
13	Stability	The product is stable
14	Incompatibility with Various Substances	Strong alkalis, most metals, bleach

### APPLICATION INSTRUCTIONS

1. For mild blemish spots/ layers, mix Jasper Clean with water with 1:1 proportion.
2. Soak the cloth or sponge in the diluted solution and rub the surfaces till the spots/layers are removed.
3. For stubborn spots/ layers neat Roff Cera Clean liquid (without mixing with water) shall be used for cleaning. Please check this in small areas before cleaning the complete area.
4. For routine tile cleaning, dilute two capful Cera Clean with half bucket water & use diluted solution for cleaning the tiles & sanitary ware.

### PACKAGING

500 ml & 1 litre

### SHELF LIFE

12 months for sealed pack when stored under cover, out of direct sunlight, damp proof condition and protect from extremes of temperature.

### SAFETY PRECAUTIONS

Keep out of reach of children. Wear suitable protective clothing, gloves and eyes/face protection. After contact with skin, wash immediately with plenty of clean water. In case of contact with eyes rinse immediately with plenty of clean water and seek medical advice. Limited to professional use only. For more details please refer the relevant Material Safety Data Sheet, available on request.



## JASPER TILE SPACERS

JASPER specializes in high-quality tile spacers, crafted to deliver precise alignment and superior durability for professional-grade tiling results. Ranging from 2mm to 10mm, these tile spacers are ideal for a variety of tile sizes and patterns, ensuring consistent gaps that simplify grouting and give a clean, polished finish. Made from durable materials that can withstand the demands of both residential and commercial projects, JASPER tile spacers are designed with ease of use in mind, making them a trusted choice for professional installers. Achieve flawless, consistent tile spacing with JASPER's reliable solutions.

### SIZE

- 2 mm • 3 mm • 4 mm • 5 mm • 6 mm • 8 mm • 10 mm